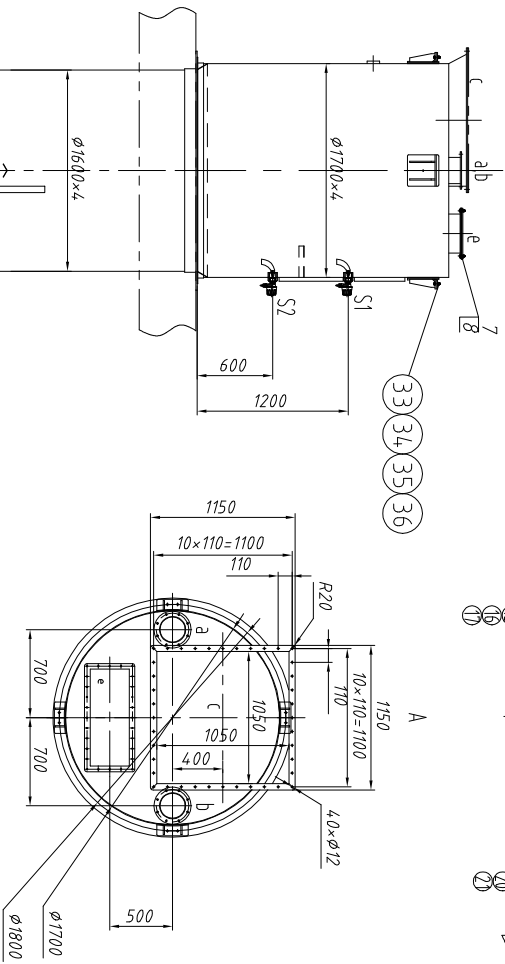
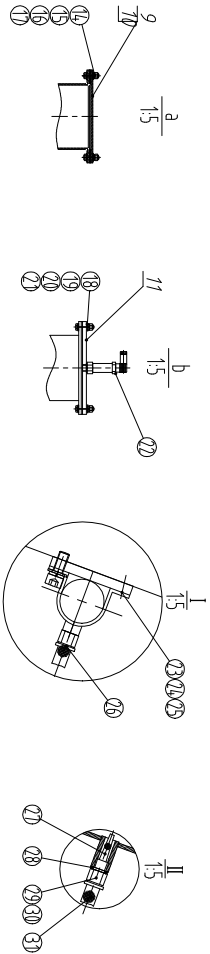


TECHNICAL SPECIFICATION

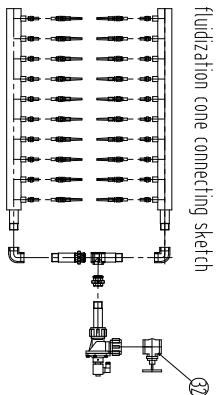
OPERATING PRESSURE MPa	NORMAL	DESIGN TEMPERATURE °C	CARBON BLACK AIR
DESIGN PRESSURE MPa	NORMAL	DESIGN TEMPERATURE °C	NORMAL
SORT OF VESSEL	NORMAL	LOW CAPACITY m³	15
MODULUS OF WELDED SEAM δ	0.7	MEDIUM CAPACITY m³	35
TOLERANCE FOR CORROSION mm	1	HIGH CAPACITY m³	8.5
WORKING TEMPERATURE °C	NORMAL	TOTAL CAPACITY m³	95
			10

CONNECTION PIPES

SYMBOL	TYPE	FLANGES STANDARD	SEALING FACE	NAME OR FUNCTION	DIMENSION OF PIPES STRETCHING LENGTH
a	DN175	PLATE	SPARE	ø208x4	100
b	DN175	PRECISURE SWITCH PORT	PLATE	ø208x4	100
c	1150x1150	DIST COLLECTOR PORT	PLATE	105x1650	150
d	1092x566	SCREW FEEDER PORT	PLATE	992x466	50
e	860x400	FEED-IN PORT	PLATE	711x310	300
f	DN175-112	LEVEL SENSOR PORT	SCREW	ø1700	
h1-20	G 1/4	AIR FLOWING PORT	SCREW	ø1800	

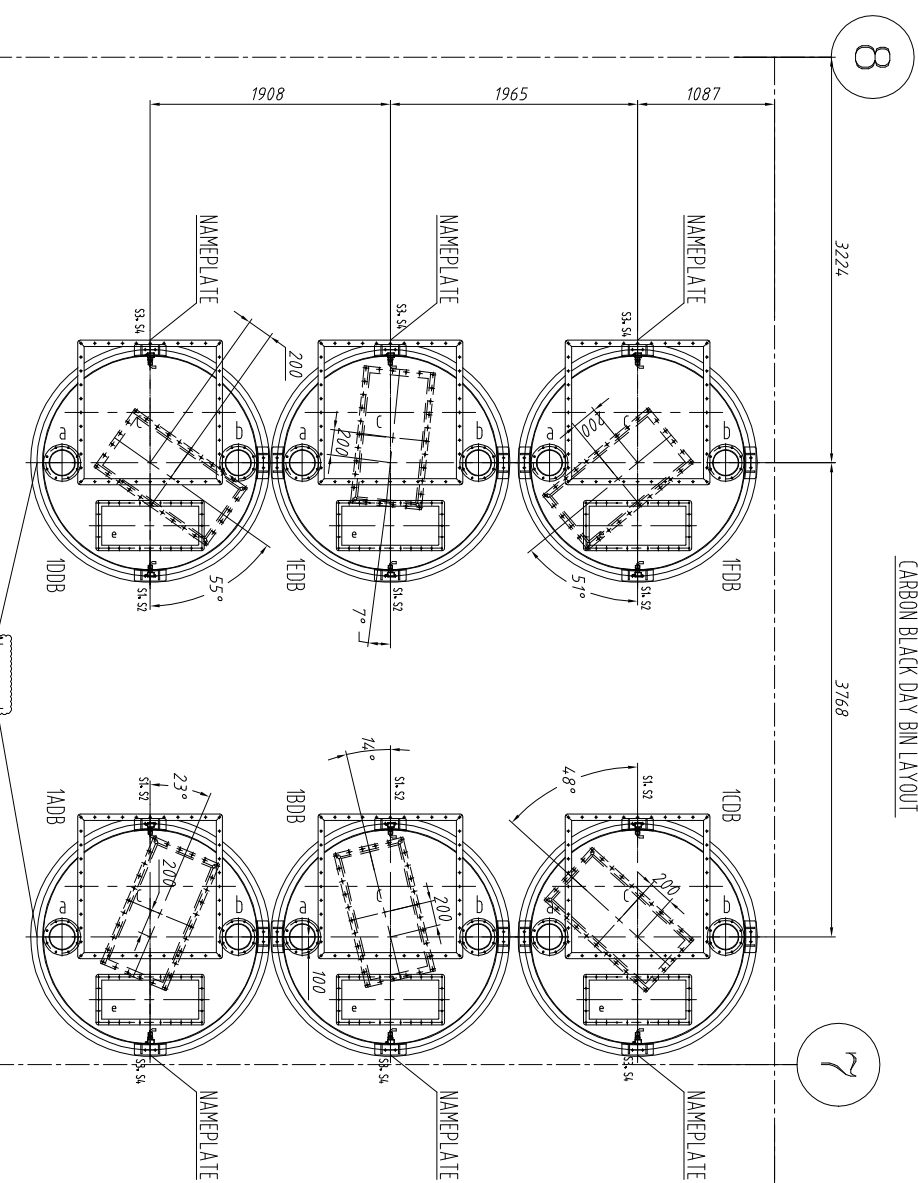


注：1、罐体封打字采用3.5号字。
2、产品编号：罐目号，日罐合格标识。
S-202401207-1ADB-1BDB-1CDB-1ODB-1FDB-1FDB



Technical requirement

- The equipment must be made according to NB/T47003.1-2009 <THE STANDARD OF COMMON PRESSURE WELDING VESSEL>.
- Welding use manual arc welding electrode type Jk22, after soldering, welding slag is removal.
- the part 2and the part 3 should be welded on the site after machining.
- The equipment should be marked on the shell and cone. 1ACB, 1BDB, 1CDB, 1ODB, 1FDB.
- The locations of level sensor seat, nozzles, and nameplate should be defined according to the layout of daily bin.
- After manufacturing the welding lines should be tested with kerosene to ensure there is no leakage.
- Part11 is used to prevent the Lower cone deforming.



030250100017 GB/T193-1987	SPRING WASHER 12	8	0	0	
030250500099 GB/T191.1-2002	PLAIN WASHER 12	16	200HV Galvanizing		
030231800036 GB/T6170-2000	NUT M12	8	0	0	
030207000078 GB/T5182-2000	BOLT T M12×4.5	8	0	0	
030420100002	gate valve DN25 101	1			
030600200008	PU PIPE US984006880	20			
030530300059	PIPE MANIFOLD DN175-200	20			
030530300281	MANIFOLD DN175-200	20			
030400300033	SEAL RING 1/4"	20			
030760200008	FILTER NOZZLE G1/4	20			
030530300256	OUTER STANDARD JOINT PIPE DN175-200	20			
030250100017 GB/T193-1987	SPRING WASHER 8	8	0	0	
030250500099 GB/T191.1-2002	PLAIN WASHER 8	8	200HV Galvanizing		
030240500691 GB/T701-2000	SCREW M8×20	8	0	0	
030821000108		1			

Mark	Number	Modified file No.	Signature	Date
Designer				
Checker				
Verifier				
Process				

Mark	Quantity	Weight	Scale
C	008	130	
Total No.	No.		

MESMAC CO., LTD	
Carbon black daily bin	
01013000469	
Xyiba.13A	